

# YOMI Pronunciation Data / Alternative Artist Name Data

Contents data for voice recognition and sorting

## Features of YOMI Pronunciation Data / Alternative Artist Name Data

YOMI Pronunciation Data is kana data from the Gracenote database including album title, track title, artist name by album and artist name by track. The database functions include kana search, sorting (including Japanese syllabic order) and voice recognition. The data is utilized in car navigation systems, home audio system and computer applications.

Alternative Name Data is extended data made up of artist nicknames, contracted names, and easily mistaken readings.

### Data available through YOMI

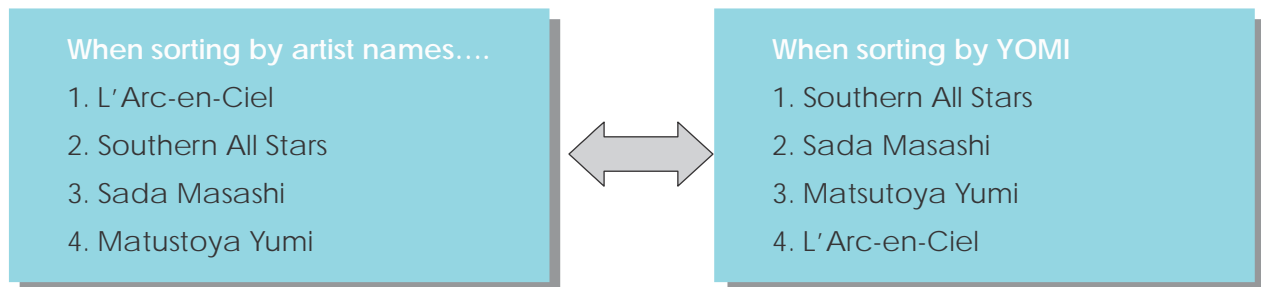
Volume of YOMI (As of Nov. 2011)

**Number of albums** : approximately 368,000

**Number of artists** : approximately 160,000

\*Newer albums and popular albums are stored in order.

### 【Example of sorting artists】



Also, with YOMI Pronunciation Data it is possible to make the following conversions to retrieve matching data.

- ◆ additional title information (Vol. ~, ~ Version, featuring~, ~ Remix) and deletion of subtitles
- ◆ Convert "ha, he" to actual sounds "wa, e"
- ◆ Convert the prolonged sound symbol "ー" to the vowel of the characters just before
- ◆ Convert to other characters such as *hiragana* and half-width katakana

## Examples of YOMI Pronunciation Data / other names

<b>Song titles</b>	GLORY ~ To the sky ~	1) グローリー 2) グロオリイ 3) グローリーソラへ 4) グローリーソラエ 5) グロオリイソラへ 6) グロオリイソラエ
<b>Artist names</b>	Hamasaki Ayumi	1) Hamasaki Ayumi 2) Ayu (Nickname) 3) Hamazaki Ayumi (wrong pronunciation)

# Information about songs in kanji

Sorting!

Searching!

Voice recognition!

# This is YOMI.

YOMI software by AIM provides an easy-to-use operating environment.

Handling a music library is complicated.

I wonder if there is an easier way to search.



AIM's YOMI will solve the problem.



It's playing "Tsunami" now.

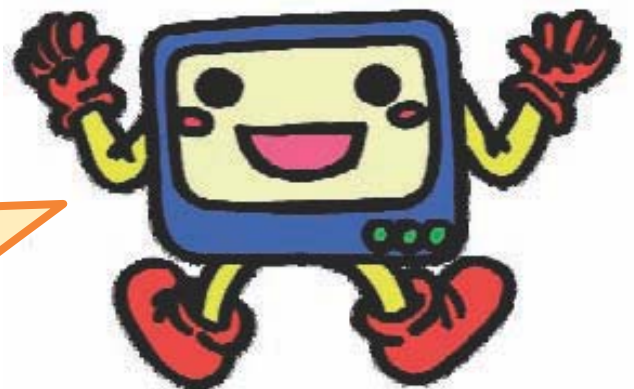


When I say "Sazan", a list comes out.

Artist names, nicknames, and titles of songs can be easily found on the first attempt.

It's handy that it can sort in Japanese syllabic order using kana.

AIM provides a simple and pleasant user experience.



YOMI is furigana (or pronunciation) data for album titles, artist names and song names.

Alternative name data includes nicknames and abbreviated names.

YOMI Pronunciation Data is provided in the Gracenote database, and can be obtained by using the recognition service provided by Gracenote. A dedicated module is needed to retrieve YOMI/Alternative Name Data.

AIM Corporation

<http://www.aim-inc.co.jp>

3-8-7 Mizonokuchi, Takatsu-ku,

Kawasaki City, Kanagawa JAPAN 213-0001

Phone: +81-44-812-0501 Fax: +81-44-812-0502

